

# 2000 Computing survey

## An AJCU – AUSSJAL comparison



ITESO, Tlaquepaque, Jalisco, México. April 2001.

AJCU data prepared by Joel Cohen (Canisius College)

AUSSJAL data prepared by Juan Lanzagorta and Fernando Casas (Iteso).

## 2001 TI Survey

- This survey is an adaptation of the 1998, 1999 and 2000 surveys.
- The period considered for this survey was from December 1999 to November 2000.
- 46 institutions (26 from AJCU and 20 from AUSJAL) took part.
- A limited analysis is presented.

# 2000 Computing survey An AJCU – AUSJAL comparison



ITESO, Tlaquepaque, Jalisco, Mexico, April 2001.

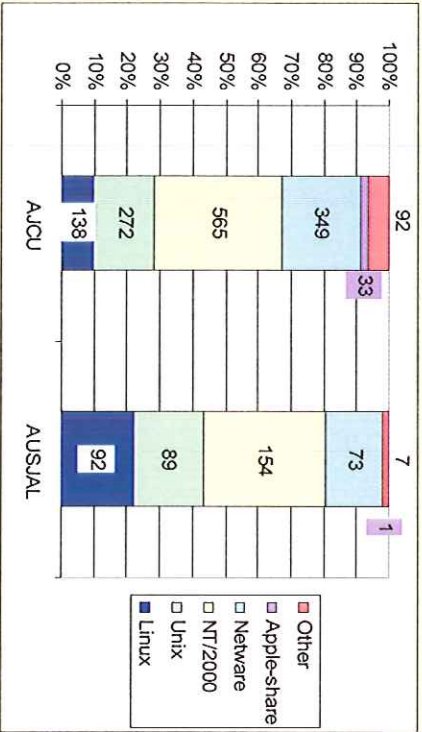
AJCU data prepared by Joel Cohen (Carnegie College)  
AUSJAL data prepared by Juan Lanzagorta and Fernando Casas (ITESO).

AJCU – AUSJAL COMPARISON

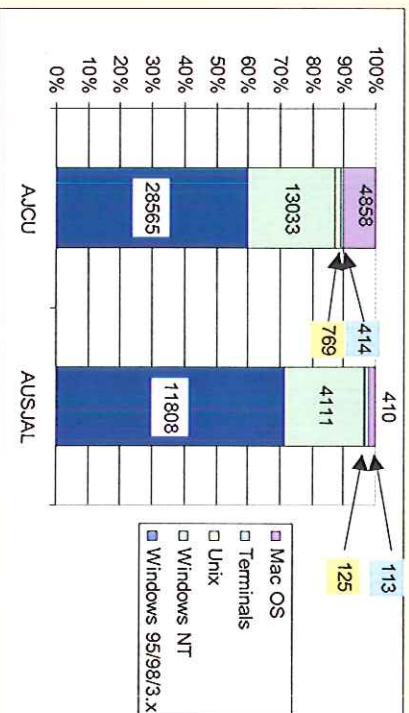
## 2001 TI Survey

- This survey is an adaptation of the 1998, 1999 and 2000 surveys.
- The period considered for this survey was from December 1999 to November 2000.
- 46 institutions (26 from AJCU and 20 from AUSJAL) took part.
- A limited analysis is presented.

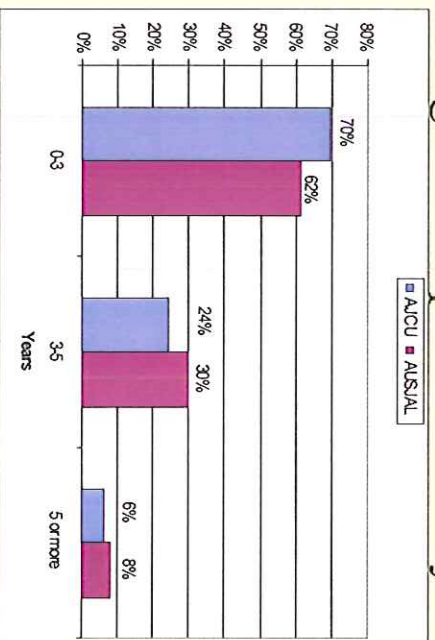
### Server operating environments



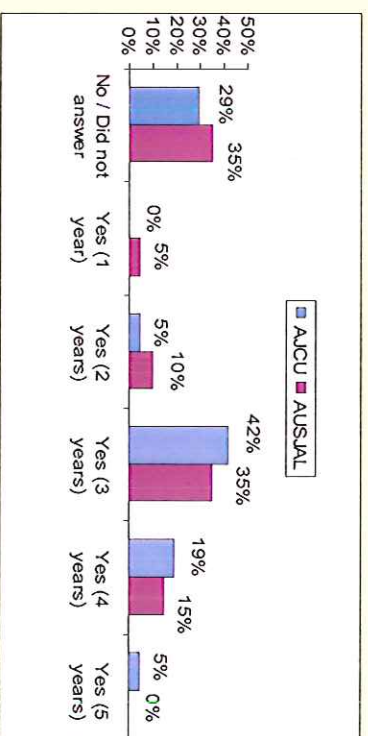
### Client operating environments



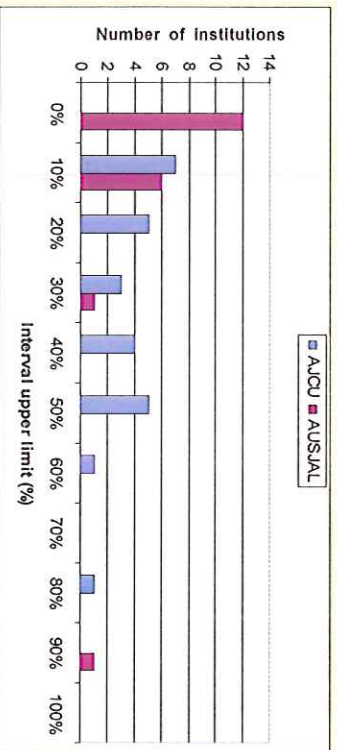
## Age of computer inventory



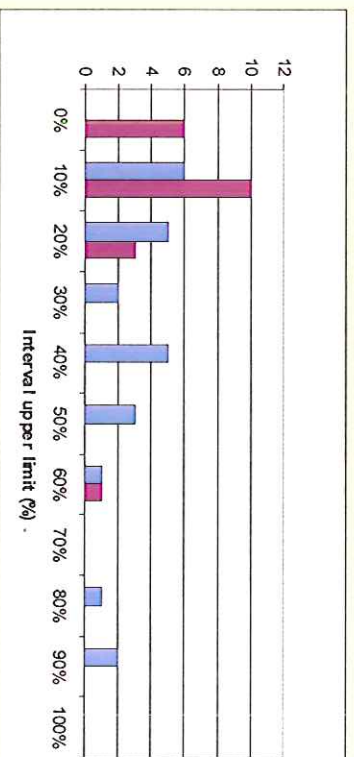
## Sustitution policy – years in cycle



### Institutional Count of Classrooms with Permanent Computer for Instructor

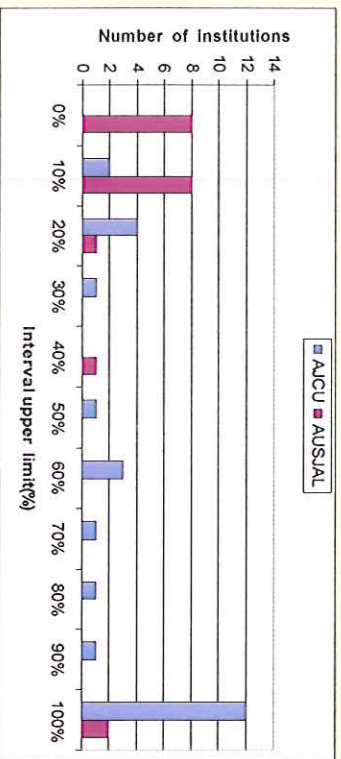


### Equipment (classrooms with computer projection)



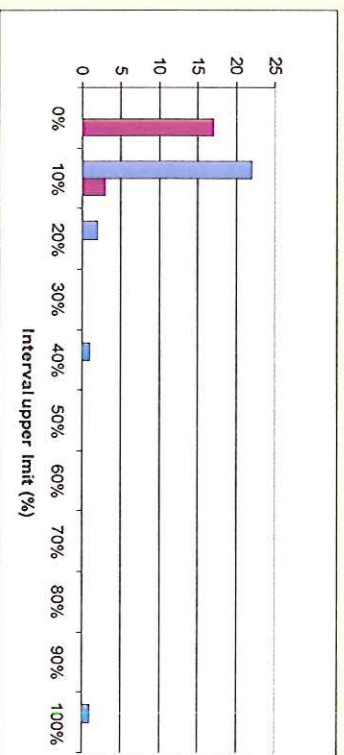
AICU - AUSAAL COMPARISON

### Classrooms with Network Jack for Instructor Laptop



AICU - AUSAAL COMPARISON

### Equipment (classrooms with network jack for students' laptop)



## Student ownership / laptop programs

### AJCU

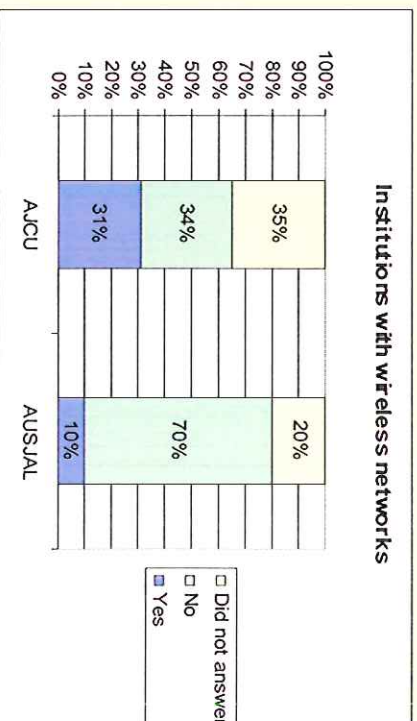
- % of students with computers at home: 75.
- A few schools have programs that require the student to buy a laptop.
- No university requires laptops for all of its students.

### AUSJAL

- % of student with computers at home: 54.
- 2 schools have programs that require the student to buy a laptop.
- No university requires laptops for all of its students.

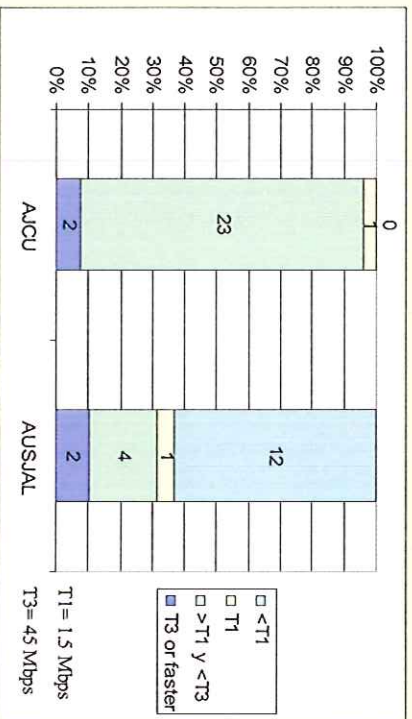
## Wireless networks (now)

Institutions with wireless networks

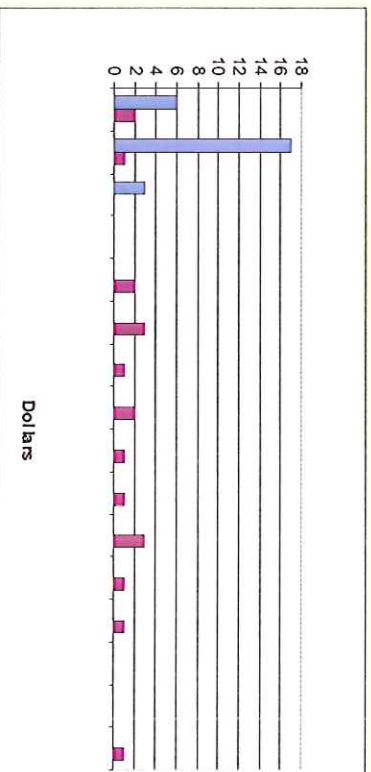




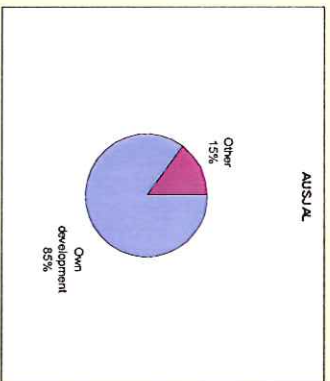
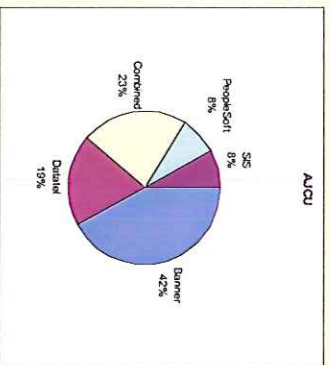
### Internet connectivity



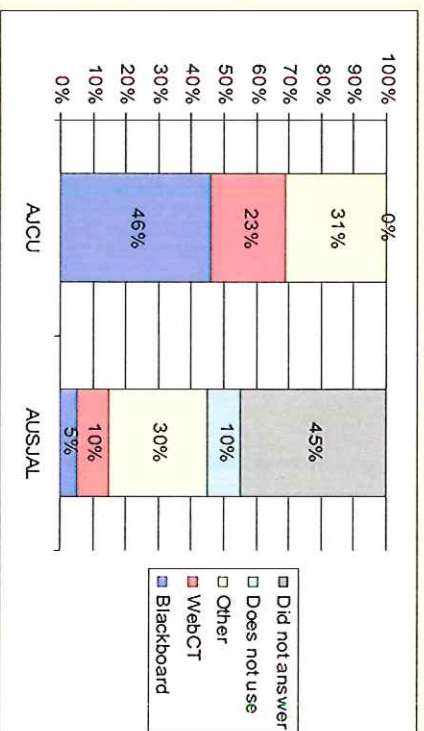
### Annual cost per Mfb/second



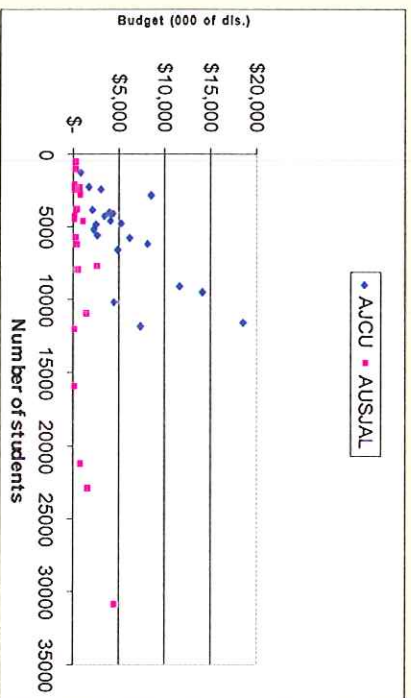
## Administrative Software- Vendor Share



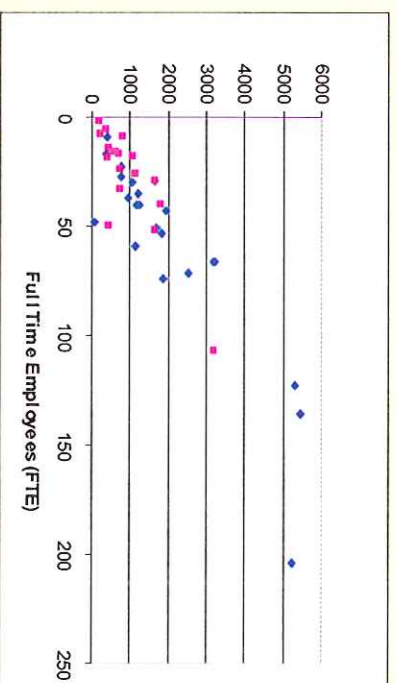
## Course management software



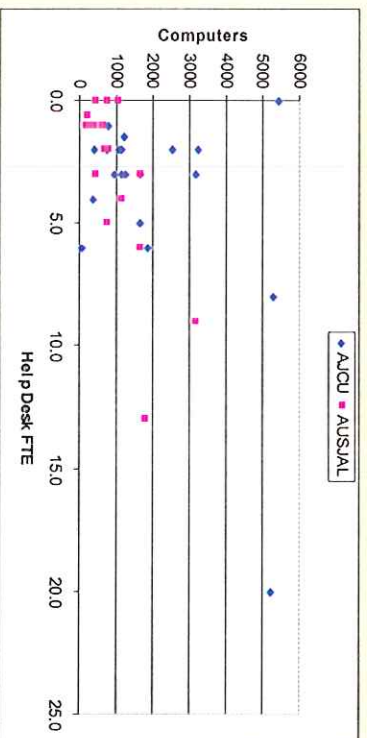
## IT Budget vs full time students



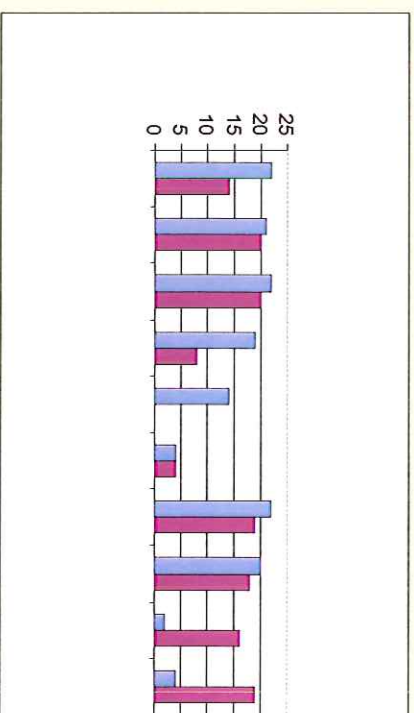
## IT Staff vs institutional computers.



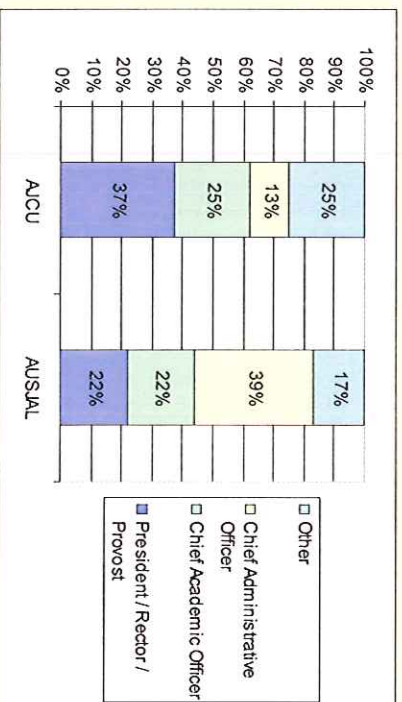
## Professional Help Desk Staff vs institutional computers



## IT Director responsibilities



## To whom does the CIO report?



## Most important issues

- AJCU**
- Human Resources.
  - Curriculum.
  - Administrative software.
  - Network problems.
  - Organizational issues.
  - Budget.
  - Equipment renewal.
  - Strategic planning.
  - Portal.
  - New buildings / spaces.

- AUSJAL**
- Development/ update of information systems (academic, administrative, etc.).
  - Salaries.
  - IT processes documentation.
  - Technological update.
  - Forming / re-structuring of the IT department.
  - Portal development / Web access.
  - Unification of data bases.
  - Training and retention of key personal.
  - Network growth (ethernet, fiber optics, etc.).
  - Implementation of intelligent carnets.



End

# 2000 Computing survey

## An AJCU – AUSJAL comparison



ITESO, Tlaquepaque, Jalisco, México. April 2001.

AJCU data prepared by Joel Cohen (Canisius College)  
AUSJAL data prepared by Juan Lanzagorta and Fernando Casas (Iteso).

AJCU – AUSJAL COMPARISON

## 2001 TI Survey

- This survey is an adaptation of the 1998, 1999 and 2000 surveys.
- The period considered for this survey was from December 1999 to November 2000.
- 46 institutions (26 from AJCU and 20 from AUSJAL) took part.
- A limited analysis is presented.

# 2000 Computing survey

## An AJCU – AUSJAL comparison



ITESO, Tlaquepaque, Jalisco, México. April 2001.

AJCU data prepared by Joel Cohen (Canisius College)

AUSJAL data prepared by Juan Lanzagorta and Fernando Casas (Iteso).

AJCU – AUSJAL COMPARISON

## 2001 TI Survey

- This survey is an adaptation of the 1998, 1999 and 2000 surveys.
- The period considered for this survey was from December 1999 to November 2000.
- 46 institutions (26 from AJCU and 20 from AUSJAL) took part.
- A limited analysis is presented.