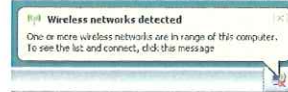


Wireless Log-In Information

I. University of San Francisco

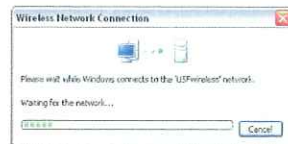
Step 1: After turning on your laptop, you will see a message in the lower right hand corner of your laptop with the title "Wireless Network Detected." Click on it.



Step 2: Click on the wireless network with the name USFwireless_AJCU and then click on the "Connect" button on the lower right portion of the window. Based on your security settings, you may see the following settings. Select "Connect Anyway."

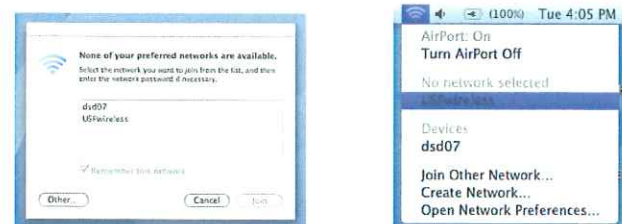


Step 3: At this point you might see a window pop up while your PC connects to the wireless network. When that window goes away you will be fully connected to the network.



Step 1: After turning on your laptop, if your wireless networking is enabled by default, a message will pop up on your desktop that lists the available wireless networks.

- Highlight USFwireless_AJCU and click "Join."
- If you do not see the pop up, click the Airport icon in the upper right hand corner and scroll down to and select USFwireless_AJCU.



Done: At this point your laptop will auto connect to the network and when it is done you will be fully connected.

II. Hotels

Wireless Access is available for free, no login required, at Hotel Kabuki, SSID: Stayonline. At Hotel Tomo, SSID: Speedlink/BestWestern.

TIMELESS BEAUTY

AGATI designs are characterized by a blend of aesthetics and engineering to create superior and enduring furniture.

Choose AGATI for nationally recognized design, service, quality and performance.

Visit us on the web at www.agati.com

AGATI
312.829.1977 or info@agati.com

The Computer for the IT Professional



MacBook Air

Run Mac OS® X, Windows, UNIX and Linux all on your Intel-based Mac



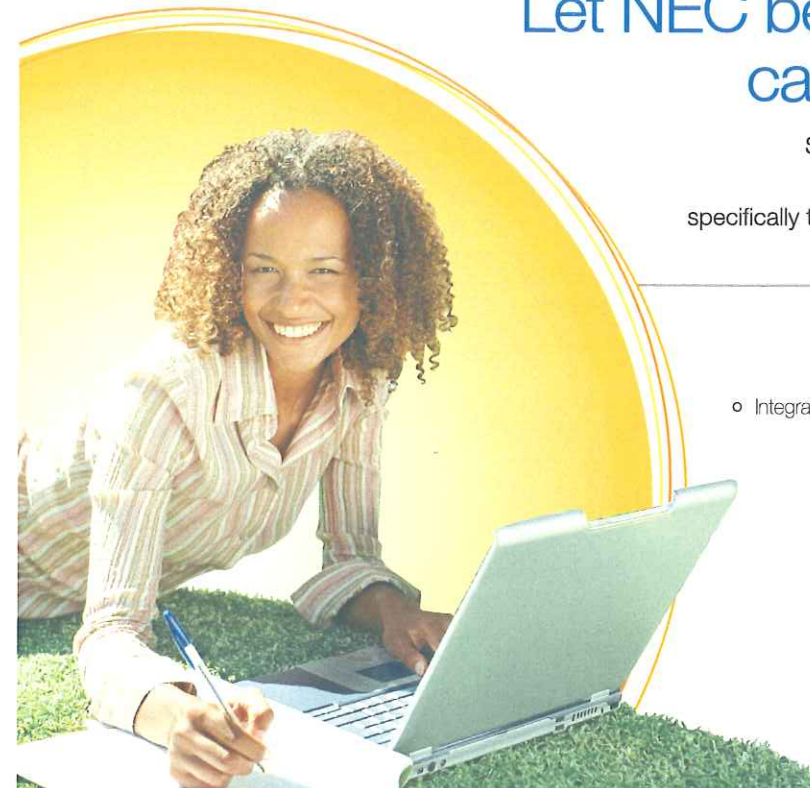
New for
Aleph - Millennium -
Unicorn - Voyager
Libraries!

WOW!

encore

Now Making Noise in the Library.

For more information visit www.encoreforlibraries.com or call 1-800-878-6600



Let NEC be your guide to the campus of the future

Students want tomorrow's technology – today.
NEC offers a variety of cutting edge solutions specifically tailored to meet the communication technology needs of higher education.

NEC's solutions can help:

- o Integrate communications with Student Lifecycle Management
- o Support collaborative and kinesthetic learning with new classroom technologies
- o Enhance campus safety and security with advanced communications solutions
- o Address the growth of mobility, flexibility and modularity on campus

www.necunified.com/highered

Empowered by Innovation **NEC**

EMC²
where information lives

“After careful financial, operational and technical analysis, USF determined that it would be in our best interest [...] to implement MozyPro backup from EMC.”

- Walter Petruska, USF

Mozy is secure, automatic, online backup for desktops, laptops and Windows servers

- **Painless:** Centrally manage 1000's of users with a web-based admin console
- **Affordable:** Requires no capital expenditure for hardware, low upfront cost
- **Secure:** Leverages industry-leading RSA® security along with 448-bit Blowfish encryption and 128-bit SSL
- **Reliable:** Backed by EMC's 25 years of market leadership in storage solutions

Mention this Ad for a
15% Discount
visit us at www.mozy.com/pro
or call 866.950.MOZY

mozy
online backup

Oracle Security

Audit Vault

- ✓ Record all changes to data in a single database
- ✓ Secure your audit data in one place
- ✓ Retrieve audit data reports quickly

Audit Before Your Auditors Arrive

ORACLE

oracle.com/goto/auditvault
or call 1.800.ORACLE.1

Hotel Kabuki Conference Room Map:

About the Hotel Kabuki:

Guestrooms

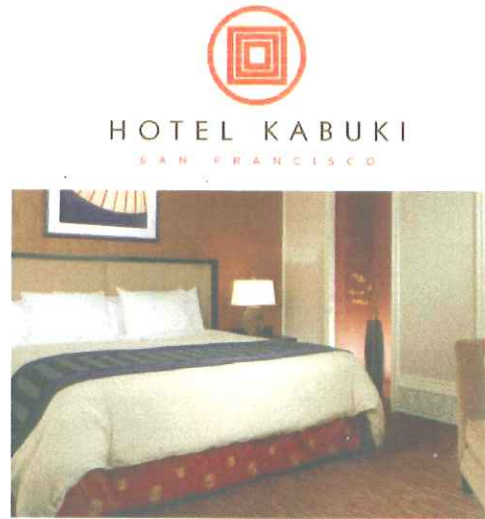
- 218 guestrooms, including 13 Suites – with a variety of choice for those seeking comfort, space and western or eastern highlights.

Meeting/Event Space

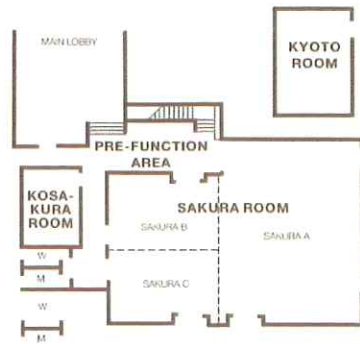
- The hotel has 14 meeting and event rooms offering 14,000 square feet of flexible space, available to accommodate events up to 600 people.

Room Amenities

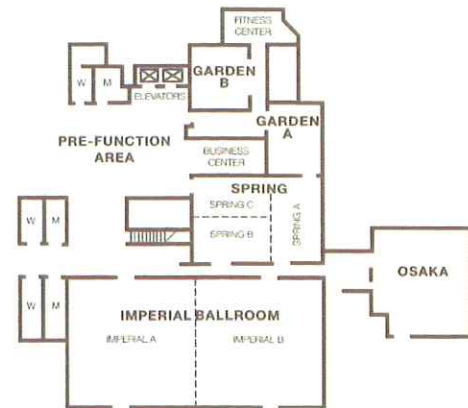
- All guestrooms are newly renovated (Fall 2007)
- Complimentary high-speed wireless internet access is available throughout the hotel
- New Serta "Concierge" bedding
- New luxury bed and bath linens
- 26-inch LCD flat screen televisions
- iHome-iPod docking station and radio
- Cable television with on-demand movies and games



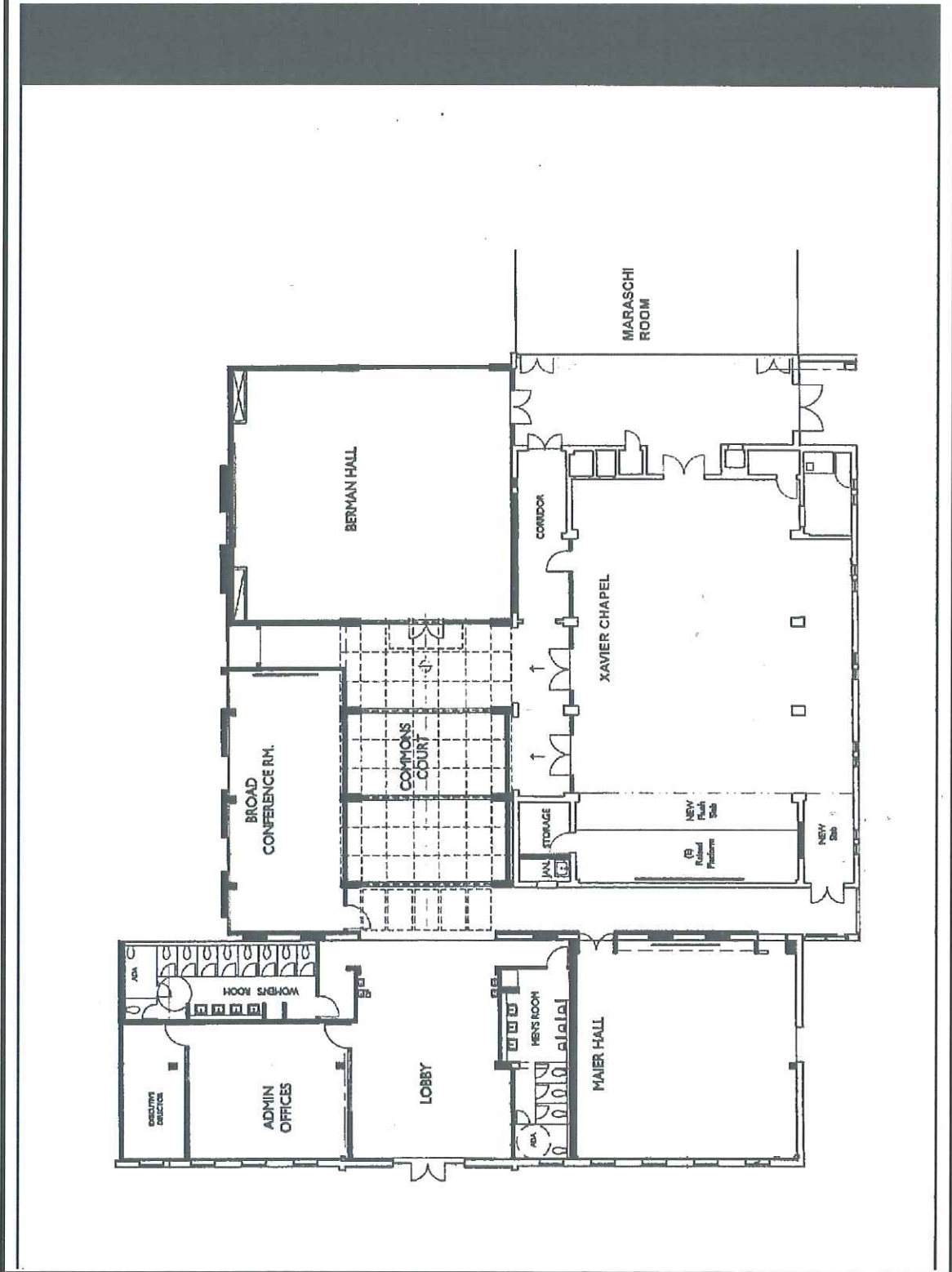
HOTEL KABUKI LOBBY LEVEL:



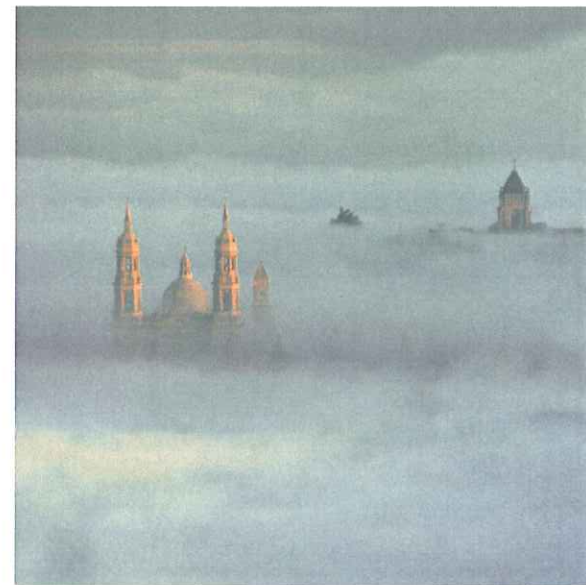
HOTEL KABUKI GARDEN LEVEL:



University of San Francisco –Fromm Hall Conference Room Map:



NOTES



Important Contact Numbers

Tracy Schroeder, Vice-President-Information Technology-ITS/USF
Office: 415-422-2680
Cell: 415-740-0278
Email: schroeder@usfca.edu

Carol Cook, Director Finance & Vendor Management-ITS/USF
Office: 415-422-6869
Cell: 415-595-6869
Email: cook@usfca.edu

Richard So, Assistant to Vice-President-Information Technology-ITS/USF
Office: 415-422-2283
Email: rlso@usfca.edu

Tyrone Cannon, Dean of Gleeson Library/Geschke Center-USF
Office: 415-422-6167
Email: cannon@usfca.edu

Carmen Fernandez-Baybay, Assistant to the Dean/Budget Coordinator,
Gleeson Library/Geschke Center-USF
Office: 415-422-2035
Email: fernandezc@usfca.edu

Vicki Rosen, Head, Distance Learning Services and Regional Libraries,
Gleeson Library/Geschke Center-USF
Office: 415-422-5387
Email: rosen@usfca.edu

University of San Francisco Main Number: 415-422-5555
2130 Fulton St. SF CA 94117
www.usfca.edu

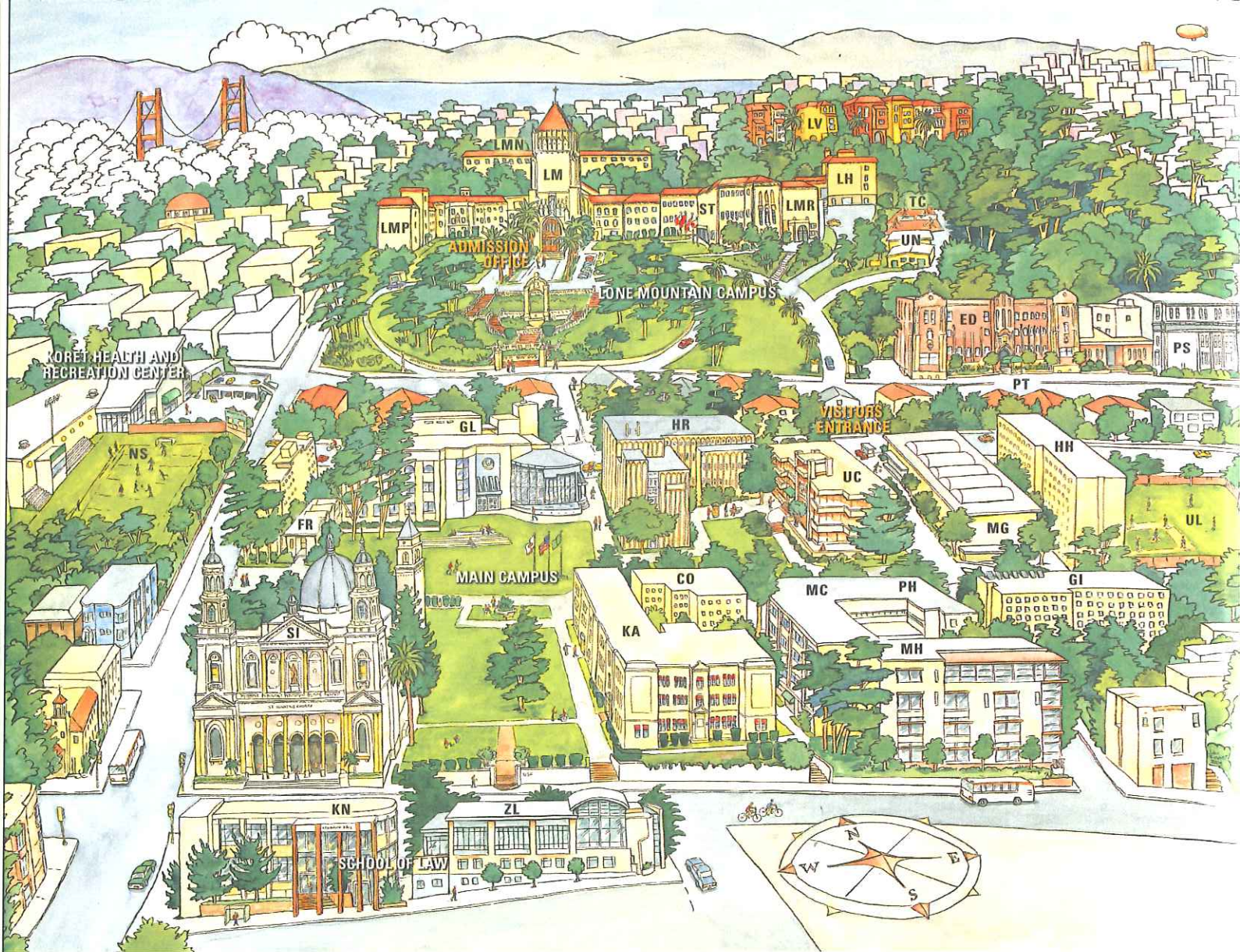
USF Public Safety Office: 415-422-4222

Campus ext. for emergency: 2911

St. Mary's Hospital (one block from USF): 415-668-1000

Hotel Kabuki: 415-922-3200

Hotel Tomo: 415-921-3111



LONE MOUNTAIN CAMPUS

- LH** Loyola House
- LM** Main Building (Admin/Classrooms)
- LMN** Lone Mountain North
- LMP** Pacific Wing
- LMR** Rossi Wing (Administration)
- LV** Loyola Village
- ST** Studio Theater
- TC** Tennis Courts
- UN** Underhill Building
ROTC/Upward Bound

SCHOOL OF EDUCATION

- ED** School of Education
- PT** USF Presentation Theater

COLLEGE OF PROFESSIONAL STUDIES

- PS** College of Professional Studies

KORET HEALTH & RECREATION CENTER

- NS** Negroesco Stadium

SCHOOL OF LAW

- KN** Kendrick Hall
- ZL** Dorraine Zief Law Library

MAIN CAMPUS

- CO** Cowell Hall
- FR** Fromm Hall
- GI** Gillson Hall
- GL** Gleeson Library
- HH** Hayes-Healy Hall
- HR** Harney Science Center
- KA** Kalmanovitz Hall
- MC** McLaren Conference Center
- MG** Memorial Gymnasium
- MH** Malloy Hall
- PH** Phelan Hall
- SI** Saint Ignatius Church
- UL** Ulrich Field & Benedetti Diamond
- UC** University Center

University of San Francisco, 2130 Fulton Street, San Francisco, CA 94117-1080

www.usfca.edu

Educating Minds and Hearts to Change the World